

ADB Technology Co., Ltd.

Shielded Construction - SMD / SHY-D Series

Feature

Large permissible DC current and low DC resistance.
 Compact and thin.
 Low cost and packed in embossed carrier tape

Application

DC/DC Converter of portable equipment.
 Camcorder, LCD TV set, Digital still camera, PDA ...
 Small size communication equipment.

Product Identification

SHY
1

4D18
2

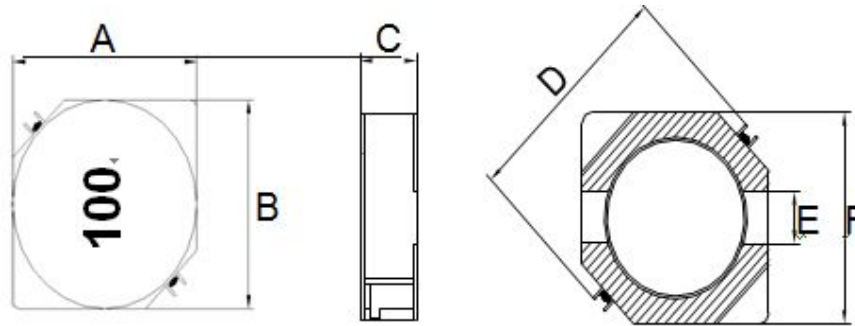
2R2
3

M
4

1. Series name.
2. Dimension.
3. Inductance.
4. Tolerance. (M=±20%, N=±30%)



Configurations & Dimensions

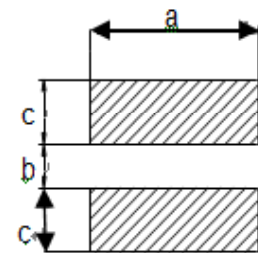


Series Name	A	B	C	D	E	F
SHY 4D18	4.7±0.3	4.7±0.3	2.0(MAX)	6.9(MAX)	1.5(REF)	4.5(REF)
SHY 4D28	4.7±0.3	4.7±0.3	3.0(MAX)	6.9(MAX)	1.5(REF)	4.5(REF)
SHY 5D18	5.7±0.3	5.7±0.3	2.0(MAX)	8.2(MAX)	2.0(REF)	5.5(REF)
SHY 5D28	5.7±0.3	5.7±0.3	3.0(MAX)	8.2(MAX)	2.0(REF)	5.5(REF)
SHY 6D28	6.7±0.3	6.7±0.3	3.0(MAX)	9.5(MAX)	2.0(REF)	6.5(REF)
SHY 6D38	6.7±0.3	6.7±0.3	4.0(MAX)	9.5(MAX)	2.0(REF)	6.5(REF)

Unit: mm

Series Name	a	b	c
SHY 4D18	5.3(REF)	1.5(REF)	1.9(REF)
SHY 4D28	5.3(REF)	1.5(REF)	1.9(REF)
SHY 5D18	6.3(REF)	2.0(REF)	2.15(REF)
SHY 5D28	6.3(REF)	2.0(REF)	2.15(REF)
SHY 6D28	7.3(REF)	2.0(REF)	2.65(REF)
SHY 6D38	7.3(REF)	2.0(REF)	2.65(REF)

Unit: mm



PCB Pattern

ADB Technology Co., Ltd.

Shielded Construction - SMD / SHY-D Series

Electrical Characteristics

SHY 4D18 Series				
Part Number	Inductance (μ H)	Test Condition (Volt / Hz)	DC Resistance Max. (m Ω)	Rated Current Max. (mA)
SHY 4D18-1R0 __	1.0	1.0 / 100K	45	1720
SHY 4D18-2R2 __	2.2	1.0 / 100K	75	1320
SHY 4D18-2R7 __	2.7	1.0 / 100K	105	1280
SHY 4D18-3R3 __	3.3	1.0 / 100K	110	1040
SHY 4D18-3R9 __	3.9	1.0 / 100K	155	880
SHY 4D18-4R7 __	4.7	1.0 / 100K	162	840
SHY 4D18-5R6 __	5.6	1.0 / 100K	170	800
SHY 4D18-6R8 __	6.8	1.0 / 100K	200	760
SHY 4D18-8R2 __	8.2	1.0 / 100K	245	680
SHY 4D18-100 __	10	1.0 / 100K	200	610
SHY 4D18-120 __	12	1.0 / 100K	210	560
SHY 4D18-150 __	15	1.0 / 100K	240	500
SHY 4D18-180 __	18	1.0 / 100K	338	480
SHY 4D18-220 __	22	1.0 / 100K	397	410
SHY 4D18-270 __	27	1.0 / 100K	441	350
SHY 4D18-330 __	33	1.0 / 100K	694	320
SHY 4D18-390 __	39	1.0 / 100K	709	300
SHY 4D18-470 __	47	1.0 / 100K	922	280
SHY 4D18-560 __	56	1.0 / 100K	1,080	260
SHY 4D18-680 __	68	1.0 / 100K	1,300	240
SHY 4D18-820 __	82	1.0 / 100K	1,550	220
SHY 4D18-101 __	100	1.0 / 100K	1,730	200

ADB Technology Co., Ltd.

Shielded Construction - SMD / SHY-D Series

Electrical Characteristics

SHY 4D28 Series				
Part Number	Inductance (μ H)	Test Condition (Volt / Hz)	DC Resistance Max. (m)	Rated Current Max. (mA)
SHY 4D28-1R2 __	1.2	1.0 / 100K	24	2560
SHY 4D28-1R8 __	1.8	1.0 / 100K	28	2200
SHY 4D28-2R2 __	2.2	1.0 / 100K	31	2040
SHY 4D28-2R7 __	2.7	1.0 / 100K	43	1600
SHY 4D28-3R3 __	3.3	1.0 / 100K	50	1570
SHY 4D28-3R9 __	3.9	1.0 / 100K	65	1440
SHY 4D28-4R7 __	4.7	1.0 / 100K	72	1320
SHY 4D28-5R6 __	5.6	1.0 / 100K	100	1170
SHY 4D28-6R8 __	6.8	1.0 / 100K	109	1120
SHY 4D28-8R2 __	8.2	1.0 / 100K	117	1040
SHY 4D28-100 __	10	1.0 / 100K	128	1000
SHY 4D28-120 __	12	1.0 / 100K	132	840
SHY 4D28-150 __	15	1.0 / 100K	149	760
SHY 4D28-180 __	18	1.0 / 100K	166	720
SHY 4D28-220 __	22	1.0 / 100K	234	700
SHY 4D28-270 __	27	1.0 / 100K	260	585
SHY 4D28-330 __	33	1.0 / 100K	378	560
SHY 4D28-390 __	39	1.0 / 100K	384	500
SHY 4D28-470 __	47	1.0 / 100K	525	600
SHY 4D28-680 __	68	1.0 / 100K	700	350
SHY 4D28-820 __	82	1.0 / 100K	915	320
SHY 4D28-101 __	100	1.0 / 100K	1,020	290
SHY 4D28-121 __	120	1.0 / 100K	1,270	270
SHY 4D28-151 __	150	1.0 / 100K	1,350	240
SHY 4D28-181 __	180	1.0 / 100K	1,540	220
SHY 4D28-221 __	220	1.0 / 100K	1,720	200
SHY 4D28-271 __	270	1.0 / 100K	1,950	160
SHY 4D28-331 __	330	1.0 / 100K	2,660	140
SHY 4D28-391 __	390	1.0 / 100K	2,830	130

ADB Technology Co., Ltd.

Shielded Construction - SMD / SHY-D Series

Electrical Characteristics

SHY 5D18 Series				
Part Number	Inductance (μ H)	Test Condition (Volt / Hz)	DC Resistance Max. (m)	Rated Current Max. (mA)
SHY 5D18-3R3 __	3.3	1.0 / 100K	35	2200
SHY 5D18-4R1 __	4.1	1.0 / 100K	57	1,950
SHY 5D18-5R4 __	5.4	1.0 / 100K	76	1,600
SHY 5D18-6R2 __	6.2	1.0 / 100K	96	1,400
SHY 5D18-8R9 __	8.9	1.0 / 100K	116	1,250
SHY 5D18-100 __	10	1.0 / 100K	124	1,200
SHY 5D18-120 __	12	1.0 / 100K	153	1,100
SHY 5D18-150 __	15	1.0 / 100K	196	970
SHY 5D18-180 __	18	1.0 / 100K	210	850
SHY 5D18-220 __	22	1.0 / 100K	290	800
SHY 5D18-270 __	27	1.0 / 100K	330	750
SHY 5D18-330 __	33	1.0 / 100K	386	650
SHY 5D18-390 __	39	1.0 / 100K	820	570
SHY 5D18-470 __	47	1.0 / 100K	595	540
SHY 5D18-560 __	56	1.0 / 100K	665	500
SHY 5D18-680 __	68	1.0 / 100K	840	430
SHY 5D18-820 __	82	1.0 / 100K	978	410
SHY 5D18-101 __	100	1.0 / 100K	1,200	360
SHY 5D18-121 __	120	1.0 / 100K	1,500	330
SHY 5D18-151 __	150	1.0 / 100K	1,710	310
SHY 5D18-181 __	180	1.0 / 100K	2,240	280
SHY 5D18-221 __	220	1.0 / 100K	2,440	230
SHY 5D18-331 __	330	1.0 / 100K	4,340	180

ADB Technology Co., Ltd.

Shielded Construction - SMD / SHY-D Series

Electrical Characteristics

SHY 5D28 Series				
Part Number	Inductance (μ H)	Test Condition (Volt / Hz)	DC Resistance Max. (m)	Rated Current Max. (mA)
SHY 5D28-2R6 __	2.6	1.0 / 100K	18	2,600
SHY 5D28-3R0 __	3.0	1.0 / 100K	24	2,400
SHY 5D28-4R2 __	4.2	1.0 / 100K	31	2,200
SHY 5D28-5R3 __	5.3	1.0 / 100K	38	1,900
SHY 5D28-6R2 __	6.2	1.0 / 100K	45	1,800
SHY 5D28-8R2 __	8.2	1.0 / 100K	53	1,600
SHY 5D28-100 __	10	1.0 / 100K	65	1,300
SHY 5D28-120 __	12	1.0 / 100K	76	1,200
SHY 5D28-150 __	15	1.0 / 100K	103	1,100
SHY 5D28-180 __	18	1.0 / 100K	110	1,000
SHY 5D28-220 __	22	1.0 / 100K	122	900
SHY 5D28-270 __	27	1.0 / 100K	175	850
SHY 5D28-330 __	33	1.0 / 100K	190	750
SHY 5D28-390 __	39	1.0 / 100K	210	700
SHY 5D28-470 __	47	1.0 / 100K	260	620
SHY 5D28-560 __	56	1.0 / 100K	300	580
SHY 5D28-680 __	68	1.0 / 100K	355	520
SHY 5D28-820 __	82	1.0 / 100K	463	460
SHY 5D28-101 __	100	1.0 / 100K	520	420
SHY 5D28-121 __	120	1.0 / 100K	560	400
SHY 5D28-151 __	150	1.0 / 100K	680	350
SHY 5D28-181 __	180	1.0 / 100K	930	320
SHY 5D28-221 __	220	1.0 / 100K	1,150	300
SHY 5D28-271 __	270	1.0 / 100K	1,560	270
SHY 5D28-331 __	330	1.0 / 100K	1,980	250
SHY 5D28-391 __	390	1.0 / 100K	2,500	220
SHY 5D28-471 __	470	1.0 / 100K	2,700	200
SHY 5D28-561 __	560	1.0 / 100K	3,120	180
SHY 5D28-681 __	680	1.0 / 100K	4,150	160

ADB Technology Co., Ltd.

Shielded Construction - SMD / SHY-D Series

Electrical Characteristics

SHY 6D28 Series				
Part Number	Inductance (μ H)	Test Condition (Volt / Hz)	DC Resistance Max. (m Ω)	Rated Current Max. (mA)
SHY 6D28-3R0 __	3.0	1.0 / 100K	24	3,000
SHY 6D28-3R3 __	3.3	1.0 / 100K	26	2,800
SHY 6D28-3R9 __	3.9	1.0 / 100K	27	2,600
SHY 6D28-5R0 __	5.0	1.0 / 100K	31	2,400
SHY 6D28-6R0 __	6.0	1.0 / 100K	35	2,250
SHY 6D28-7R3 __	7.3	1.0 / 100K	54	2,100
SHY 6D28-8R6 __	8.6	1.0 / 100K	58	1,850
SHY 6D28-100 __	10	1.0 / 100K	65	1,700
SHY 6D28-120 __	12	1.0 / 100K	70	1,550
SHY 6D28-150 __	15	1.0 / 100K	84	1,400
SHY 6D28-180 __	18	1.0 / 100K	95	1,320
SHY 6D28-220 __	22	1.0 / 100K	128	1,200
SHY 6D28-270 __	27	1.0 / 100K	142	1,050
SHY 6D28-330 __	33	1.0 / 100K	165	970
SHY 6D28-390 __	39	1.0 / 100K	210	860
SHY 6D28-470 __	47	1.0 / 100K	238	800
SHY 6D28-560 __	56	1.0 / 100K	277	730
SHY 6D28-680 __	68	1.0 / 100K	304	650
SHY 6D28-820 __	82	1.0 / 100K	390	600
SHY 6D28-101 __	100	1.0 / 100K	535	540
SHY 6D28-121 __	120	1.0 / 100K	750	510
SHY 6D28-151 __	150	1.0 / 100K	950	470
SHY 6D28-181 __	180	1.0 / 100K	1,200	410
SHY 6D28-221 __	220	1.0 / 100K	1,500	370
SHY 6D28-271 __	270	1.0 / 100K	1,700	330
SHY 6D28-331 __	330	1.0 / 100K	2,150	280
SHY 6D28-391 __	390	1.0 / 100K	2,250	270
SHY 6D28-471 __	470	1.0 / 100K	3,150	210
SHY 6D28-561 __	560	1.0 / 100K	3,750	200
SHY 6D28-681 __	680	1.0 / 100K	5,150	200

ADB Technology Co., Ltd.

Shielded Construction - SMD / SHY-D Series

Electrical Characteristics

<i>SHY 6D38 Series</i>				
Part Number	Inductance (μ H)	Test Condition (Volt / Hz)	DC Resistance Max. (m Ω)	Rated Current Max. (mA)
SHY 6D38-3R3 __	3.3	1.0 / 100K	20	3,500
SHY 6D38-5R0 __	5.0	1.0 / 100K	24	2,900
SHY 6D38-6R2 __	6.2	1.0 / 100K	27	2,500
SHY 6D38-7R4 __	7.4	1.0 / 100K	31	2,300
SHY 6D38-8R7 __	8.7	1.0 / 100K	34	2,200
SHY 6D38-100 __	10	1.0 / 100K	38	2,000
SHY 6D38-120 __	12	1.0 / 100K	53	1,700
SHY 6D38-150 __	15	1.0 / 100K	57	1,600
SHY 6D38-180 __	18	1.0 / 100K	92	1,500
SHY 6D38-220 __	22	1.0 / 100K	96	1,300
SHY 6D38-270 __	27	1.0 / 100K	109	1,200
SHY 6D38-330 __	33	1.0 / 100K	124	1,100
SHY 6D38-390 __	39	1.0 / 100K	138	1,000
SHY 6D38-470 __	47	1.0 / 100K	155	950
SHY 6D38-560 __	56	1.0 / 100K	202	850
SHY 6D38-680 __	68	1.0 / 100K	234	750
SHY 6D38-820 __	82	1.0 / 100K	324	700
SHY 6D38-101 __	100	1.0 / 100K	358	650
SHY 6D38-121 __	120	1.0 / 100K	470	590
SHY 6D38-151 __	150	1.0 / 100K	580	540
SHY 6D38-181 __	180	1.0 / 100K	690	490
SHY 6D38-221 __	220	1.0 / 100K	890	430
SHY 6D38-271 __	270	1.0 / 100K	1,290	400
SHY 6D38-331 __	330	1.0 / 100K	1,700	370
SHY 6D38-391 __	390	1.0 / 100K	1,750	340
SHY 6D38-471 __	470	1.0 / 100K	2,200	320
SHY 6D38-561 __	560	1.0 / 100K	2,850	290
SHY 6D38-681 __	680	1.0 / 100K	3,200	250
SHY 6D38-821 __	820	1.0 / 100K	4,050	220
SHY 6D38-102 __	1000	1.0 / 100K	5,700	200

ADB Technology Co., Ltd.

Shielded Construction - SMD / SHY-D Series

Feature

Large permissible DC current and low DC resistance.

Compact and thin.

Low cost and packed in embossed carrier tape

Application

DC/DC Converter of portable equipment.

Camcorder, LCD TV set, Digital still camera, PDA ...

Small size communication equipment.

Product Identification

SHY
1

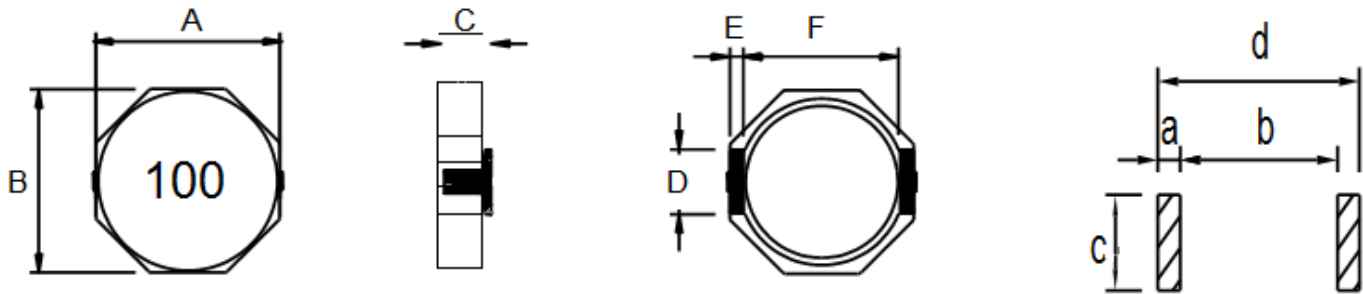
8D28
2

2R2
3

M
4

1. Series name.
2. Dimension.
3. Inductance.
4. Tolerance.
(M=±20%, N=±30%)

Configurations & Dimensions



Series Name	A	B	C	D	E	F
SHY 8D28	9.8(MAX)	8.3(MAX)	3.2(max)	2.5±0.2	1.2typ	6.3 typ
SHY 8D43	9.8(MAX)	8.3(MAX)	4.7(max)	2.5±0.2	1.2typ	6.3 typ

Unit: mm

Series Name	a	b	c	d
SHY 8D28	2.0(REF)	6.1(REF)	2.8(REF)	10.1(REF)
SHY 8D43	2.0(REF)	6.1(REF)	2.8(REF)	10.1(REF)

Unit: mm

ADB Technology Co., Ltd.

Shielded Construction - SMD / SHY-D Series

Electrical Characteristics

<i>SHY 8D28 Series</i>				
Part Number	Inductance (μ H)	Test Condition (Volt / Hz)	DC Resistance Max. (m)	Rated Current Max. (mA)
SHY 8D28-2R5 __	2.5	0.1 / 100K	16	4,500
SHY 8D28-3R3 __	3.3	0.1 / 100K	18	4,000
SHY 8D28-4R7 __	4.7	0.1 / 100K	25	3,400
SHY 8D28-7R3 __	7.3	0.1 / 100K	39	2,800
SHY 8D28-100 __	10	0.1 / 100K	47	2500
SHY 8D28-150 __	15	0.1 / 100K	69	1,900
SHY 8D28-220 __	22	0.1 / 100K	99	1,600
SHY 8D28-330 __	33	0.1 / 100K	156	1,300
SHY 8D28-470 __	47	0.1 / 100K	195	1,150
SHY 8D28-680 __	68	0.1 / 100K	286	920
SHY 8D28-101 __	100	0.1 / 100K	430	750
<i>SHY 8D43 Series</i>				
Part Number	Inductance (μ H)	Test Condition (Volt / Hz)	DC Resistance Max. (m)	Rated Current Max. (mA)
SHY 8D43-2R0 __	2.0	0.1 / 100K	14	5500
SHY 8D43-3R9 __	3.9	0.1 / 100K	19	4500
SHY 8D43-4R7 __	4.7	0.1 / 100K	22	4100
SHY 8D43-6R8 __	6.8	0.1 / 100K	25	3900
SHY 8D43-100 __	10	0.1 / 100K	36	3200
SHY 8D43-150 __	15	0.1 / 100K	53	2300
SHY 8D43-220 __	22	0.1 / 100K	75	1800
SHY 8D43-330 __	33	0.1 / 100K	125	1400
SHY 8D43-470 __	47	0.1 / 100K	150	1300
SHY 8D43-680 __	68	0.1 / 100K	240	1000
SHY 8D43-101 __	100	0.1 / 100K	360	800

ADB Technology Co., Ltd.

Shielded Construction - SMD / SHY-D Series

Feature

- High current and inductance capacity.
- Specially designed for surface mounting.
- equipment, good for high density application.
- Low profile very effective in space-conscious applications.
- Low resistance and high-energy storage.

Application

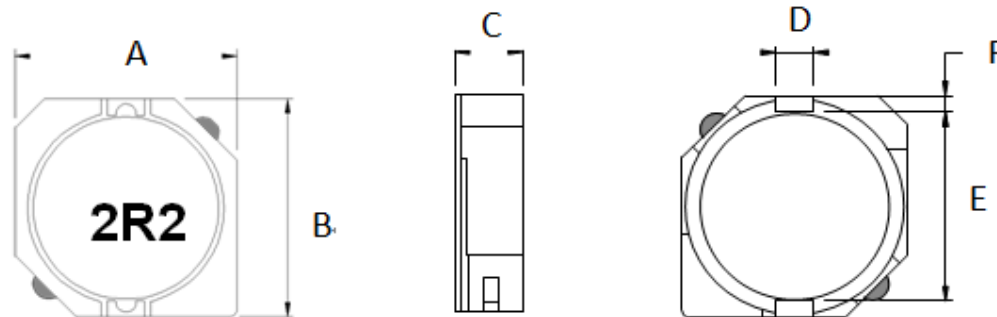
- Power supply for VTR, OA equipment, LCD TV,
- Notebook PC, DC/DC Converter, DC/AC Inverter.

Product Identification

SHY **10D30** **2R2** **M**
 1 2 3 4

1. Series name. 4. Tolerance.
 2. Dimension. (M=±20%,N=±30%)
 3. Inductance.

Configurations & Dimensions

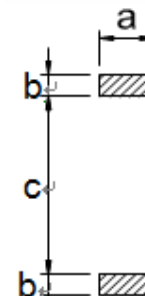


Series Name	A	B	C	D	E	F
SHY 10D30	10.5(MAX)	10.5(MAX)	3.2 max.	3.0±0.2	7.7±0.3	1.2±0.2
SHY 10D40	10.5(MAX)	10.5(MAX)	4.2 max.	3.0±0.2	7.7±0.3	1.2±0.2
SHY 10D50	10.5(MAX)	10.5(MAX)	5.2 max.	3.0±0.2	7.7±0.3	1.2±0.2

Unit: mm

Series Name	a	b	c
SHY 10D30	3.2	1.6	7.3
SHY 10D40	3.2	1.6	7.3
SHY 10D50	3.2	1.6	7.3

Unit: mm



ADB Technology Co., Ltd.

Shielded Construction - SMD / SHY-D Series

Electrical Characteristics

SHY 10D30 Series				
Part Number	Inductance (μ H)	Test Condition (Volt / Hz)	DC Resistance Max. (m)	Rated Current Max. (mA)
SHY 10D30-1R5 __	1.5	1.0 / 100K	18	5,000
SHY 10D30-2R2 __	2.2	1.0 / 100K	20	4,800
SHY 10D30-3R3 __	3.3	1.0 / 100K	25	4,500
SHY 10D30-4R7 __	4.7	1.0 / 100K	30	4,300
SHY 10D30-6R8 __	6.8	1.0 / 100K	40	3,900
SHY 10D30-8R2 __	8.2	1.0 / 100K	50	3,500
SHY 10D30-100 __	10	1.0 / 100K	59	3,180
SHY 10D30-150 __	15	1.0 / 100K	91	2,600
SHY 10D30-220 __	22	1.0 / 100K	143	2,160
SHY 10D30-330 __	33	1.0 / 100K	213	1,740
SHY 10D30-470 __	47	1.0 / 100K	299	1,430
SHY 10D30-560 __	56	1.0 / 100K	335	1,360
SHY 10D30-680 __	68	1.0 / 100K	429	1,220
SHY 10D30-820 __	82	1.0 / 100K	494	1,140
SHY 10D30-101 __	100	1.0 / 100K	683	1,020
SHY 10D30-121 __	120	1.0 / 100K	754	890
SHY 10D30-151 __	150	1.0 / 100K	871	840
SHY 10D30-221 __	220	1.0 / 100K	997	700
SHY 10D30-331 __	330	1.0 / 100K	1,578	500

ADB Technology Co., Ltd.

Shielded Construction - SMD / SHY-D Series

Electrical Characteristics

<i>SHY 10D40 Series</i>				
Part Number	Inductance (μ H)	Test Condition (Volt / Hz)	DC Resistance Max. (m)	Rated Current Max. (mA)
SHY 10D40-1R5 __	1.5	1.0 / 100K	9	10,000
SHY 10D40-2R2 __	2.2	1.0 / 100K	12	7,500
SHY 10D40-3R3 __	3.3	1.0 / 100K	15	6,000
SHY 10D40-5R2 __	5.2	1.0 / 100K	22	5,500
SHY 10D40-7R0 __	7	1.0 / 100K	27	4,800
SHY 10D40-100 __	10	1.0 / 100K	42	4,400
SHY 10D40-150 __	15	1.0 / 100K	56	3,600
SHY 10D40-220 __	22	1.0 / 100K	73	2,900
SHY 10D40-330 __	33	1.0 / 100K	105	2,300
SHY 10D40-470 __	47	1.0 / 100K	144	2,100
SHY 10D40-680 __	68	1.0 / 100K	213	1,500
SHY 10D40-101 __	100	1.0 / 100K	304	1,350
SHY 10D40-151 __	150	1.0 / 100K	506	1,150
SHY 10D40-221 __	220	1.0 / 100K	756	920
SHY 10D40-331 __	330	1.0 / 100K	1090	700

ADB Technology Co., Ltd.

Shielded Construction - SMD / SHY-D Series

Electrical Characteristics

SHY 10D50 Series				
Part Number	Inductance (μ H)	Test Condition (Volt / Hz)	DC Resistance Max. (m Ω)	Rated Current Max. (mA)
SHY 10D50-1R2 __	1.2	1.0 / 100K	7	10,500
SHY 10D50-2R2 __	2.2	1.0 / 100K	8	9,300
SHY 10D50-3R3 __	3.3	1.0 / 100K	11	7,800
SHY 10D50-4R7 __	4.7	1.0 / 100K	13	6,400
SHY 10D50-5R6 __	5.6	1.0 / 100K	16	5,900
SHY 10D50-6R8 __	6.8	1.0 / 100K	18	5,400
SHY 10D50-8R2 __	8.2	1.0 / 100K	22	4,850
SHY 10D50-100 __	10	1.0 / 100K	26	4,450
SHY 10D50-120 __	12	1.0 / 100K	33	4,000
SHY 10D50-150 __	15	1.0 / 100K	41	3,600
SHY 10D50-180 __	18	1.0 / 100K	46	3,200
SHY 10D50-220 __	22	1.0 / 100K	61	2,950
SHY 10D50-270 __	27	1.0 / 100K	69	2,700
SHY 10D50-330 __	33	1.0 / 100K	84	2,400
SHY 10D50-390 __	39	1.0 / 100K	106	2,300
SHY 10D50-470 __	47	1.0 / 100K	130	2,000
SHY 10D50-560 __	56	1.0 / 100K	149	1,900
SHY 10D50-680 __	68	1.0 / 100K	201	1,650
SHY 10D50-820 __	82	1.0 / 100K	227	1,500
SHY 10D50-101 __	100	1.0 / 100K	253	1,350
SHY 10D50-121 __	120	1.0 / 100K	303	1,280
SHY 10D50-151 __	150	1.0 / 100K	370	1,120
SHY 10D50-181 __	180	1.0 / 100K	419	1,040
SHY 10D50-221 __	220	1.0 / 100K	500	940
SHY 10D50-271 __	270	1.0 / 100K	672	840
SHY 10D50-331 __	330	1.0 / 100K	812	750
SHY 10D50-391 __	390	1.0 / 100K	953	700
SHY 10D50-471 __	470	1.0 / 100K	1,290	600
SHY 10D50-561 __	560	1.0 / 100K	1,430	540
SHY 10D50-681 __	680	1.0 / 100K	1,600	520
SHY 10D50-821 __	820	1.0 / 100K	1,770	500
SHY 10D50-102 __	1000	1.0 / 100K	1,990	480