

ADB Technology Co., Ltd.

Shielded Construction - SMT / SCY

Feature

Excellent soldeability and heat resistance.
 Excellent terminal strength.
 Packed in embossed carrier tape and can be used by automatic mounting machine.
 Available in various sizes. Easy to customized

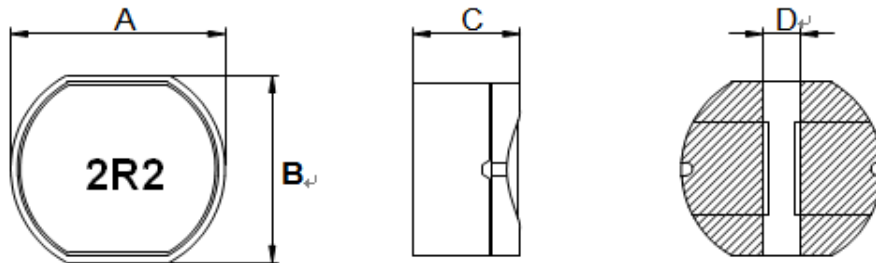
Application

Power supply for VCR, OA equipment, LCD TV,
 Notebook PC, DC/DC Converter, DC/AC Inverter.

Product Identification



Configurations & Dimensions

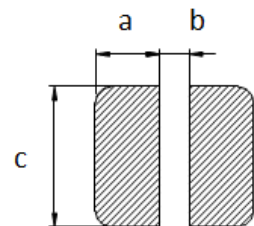


Series Name	A	B	C	D
SCY 0603	6.5(MAX)	5.9(MAX)	3.5(MAX)	1.7(REF)
SCY 0704	8.3(MAX)	7.5(MAX)	4.5(MAX)	1.9(REF)
SCY 1005	10.5(MAX)	9.5(MAX)	5.5(MAX)	2.5(REF)
SCY 1205	13.0(MAX)	12.0(MAX)	5.5(MAX)	3.0(REF)

Unit: mm

Series Name	a	b	c
SCY 0603	2.25(REF)	1.7(REF)	5.5(REF)
SCY 0704	4.0(REF)	2.0(REF)	7.5(REF)
SCY 1005	5.0(REF)	2.5(REF)	9.5(REF)
SCY 1205	6.0(REF)	3.0(REF)	12.0(REF)

Unit: mm



PCB Pattern

ADB Technology Co., Ltd.

Shielded Construction - SMT / SCY Series

Electrical Characteristics

SCY 0603 Series				
Part Number	Inductance (μ H)	Test Condition (Volt / Hz)	DC Resistance Max. (m Ω)	Rated Current Max. (mA)
SCY 0603-100 __	10	1.0 / 2.52M	140	1000
SCY 0603-120 __	12	1.0 / 2.52M	160	940
SCY 0603-150 __	15	1.0 / 2.52M	180	860
SCY 0603-180 __	18	1.0 / 2.52M	250	780
SCY 0603-220 __	22	1.0 / 2.52M	320	760
SCY 0603-270 __	27	1.0 / 2.52M	360	640
SCY 0603-330 __	33	1.0 / 2.52M	410	610
SCY 0603-390 __	39	1.0 / 2.52M	470	530
SCY 0603-470 __	47	1.0 / 2.52M	510	500
SCY 0603-560 __	56	1.0 / 2.52M	720	460
SCY 0603-680 __	68	1.0 / 2.52M	820	420
SCY 0704 Series				
Part Number	Inductance (μ H)	Test Condition (Volt / Hz)	DC Resistance Max. (m Ω)	Rated Current Max. (mA)
SCY 0704-3R9 __	3.9	1.0 / 100K	20	3800
SCY 0704-100 __	10	1.0 / 100K	70	1650
SCY 0704-120 __	12	1.0 / 100K	70	1570
SCY 0704-150 __	15	1.0 / 100K	80	1390
SCY 0704-180 __	18	1.0 / 100K	100	1290
SCY 0704-220 __	22	1.0 / 100K	130	1120
SCY 0704-270 __	27	1.0 / 100K	160	1060
SCY 0704-330 __	33	1.0 / 100K	180	970
SCY 0704-390 __	39	1.0 / 100K	180	910
SCY 0704-470 __	47	1.0 / 100K	270	800
SCY 0704-560 __	56	1.0 / 100K	290	760
SCY 0704-680 __	68	1.0 / 100K	330	680
SCY 0704-820 __	82	1.0 / 100K	430	620
SCY 0704-101 __	100	1.0 / 100K	490	550
SCY 0704-121 __	120	1.0 / 100K	680	490
SCY 0704-151 __	150	1.0 / 100K	940	440
SCY 0704-181 __	180	1.0 / 100K	1000	400
SCY 0704-221 __	220	1.0 / 100K	1180	360
SCY 0704-271 __	270	1.0 / 100K	1300	330

ADB Technology Co., Ltd.

Shielded Construction - SMT / SCY Series

Electrical Characteristics

<i>SCY 1005 Series</i>				
Part Number	Inductance (μ H)	Test Condition (Volt / Hz)	DC Resistance Max. (m Ω)	Rated Current Max. (mA)
SCY 1005-100 __	10	1.0 / 100K	60	2060
SCY 1005-120 __	12	1.0 / 100K	70	1940
SCY 1005-150 __	15	1.0 / 100K	70	1720
SCY 1005-180 __	18	1.0 / 100K	80	1,580
SCY 1005-220 __	22	1.0 / 100K	80	1,420
SCY 1005-270 __	27	1.0 / 100K	100	1,320
SCY 1005-330 __	33	1.0 / 100K	110	1,160
SCY 1005-390 __	39	1.0 / 100K	120	1,100
SCY 1005-470 __	47	1.0 / 100K	140	1,000
SCY 1005-560 __	56	1.0 / 100K	190	930
SCY 1005-680 __	68	1.0 / 100K	210	850
SCY 1005-820 __	82	1.0 / 100K	280	790
SCY 1005-101 __	100	1.0 / 100K	340	720
SCY 1005-121 __	120	1.0 / 100K	370	630
SCY 1005-151 __	150	1.0 / 100K	510	550
SCY 1005-181 __	180	1.0 / 100K	570	500
SCY 1005-221 __	220	1.0 / 100K	780	470
SCY 1005-271 __	270	1.0 / 100K	870	410
SCY 1005-331 __	330	1.0 / 100K	1200	370
SCY 1005-391 __	390	1.0 / 100K	1340	350
SCY 1005-471 __	470	1.0 / 100K	1500	330

ADB Technology Co., Ltd.

Shielded Construction - SMT / SCY Series

Electrical Characteristics

SCY 1205 Series				
Part Number	Inductance (μH)	Test Condition (Volt / Hz)	DC Resistance Max. (mΩ)	Rated Current Max. (mA)
SCY 1205-100 __	10	1.0 / 100K	50	2,650
SCY 1205-120 __	12	1.0 / 100K	50	2,500
SCY 1205-150 __	15	1.0 / 100K	60	2,450
SCY 1205-180 __	18	1.0 / 100K	60	2,400
SCY 1205-220 __	22	1.0 / 100K	70	2,200
SCY 1205-270 __	27	1.0 / 100K	80	2,000
SCY 1205-330 __	33	1.0 / 100K	100	1,800
SCY 1205-390 __	39	1.0 / 100K	110	1,650
SCY 1205-470 __	47	1.0 / 100K	120	1,500
SCY 1205-560 __	56	1.0 / 100K	150	1,380
SCY 1205-680 __	68	1.0 / 100K	170	1,260
SCY 1205-820 __	82	1.0 / 100K	200	1,140
SCY 1205-101 __	100	1.0 / 100K	250	1,050
SCY 1205-121 __	120	1.0 / 100K	280	950
SCY 1205-151 __	150	1.0 / 100K	400	850
SCY 1205-181 __	180	1.0 / 100K	480	770
SCY 1205-221 __	220	1.0 / 100K	520	700
SCY 1205-271 __	270	1.0 / 100K	700	630
SCY 1205-331 __	330	1.0 / 100K	800	570
SCY 1205-391 __	390	1.0 / 100K	1,080	520
SCY 1205-471 __	470	1.0 / 100K	1,200	480
SCY 1205-561 __	560	1.0 / 100K	1,340	440
SCY 1205-681 __	680	1.0 / 100K	1,780	400
SCY 1205-821 __	820	1.0 / 100K	2,000	360