

ADB Technology Co., Ltd.

Unshielded Construction - SMT / SIN Series

Feature

Excellent soldability and heat resistance.
 Suitable for flow and reflow soldering.
 Packed in embossed carrier tape and can be used by automatic mounting machine.

Application

Excellent for power line DC/DC Conversion applications used in hard disk, notebook computer and other electronic equipment.

Product Identification

SIN 3216
1

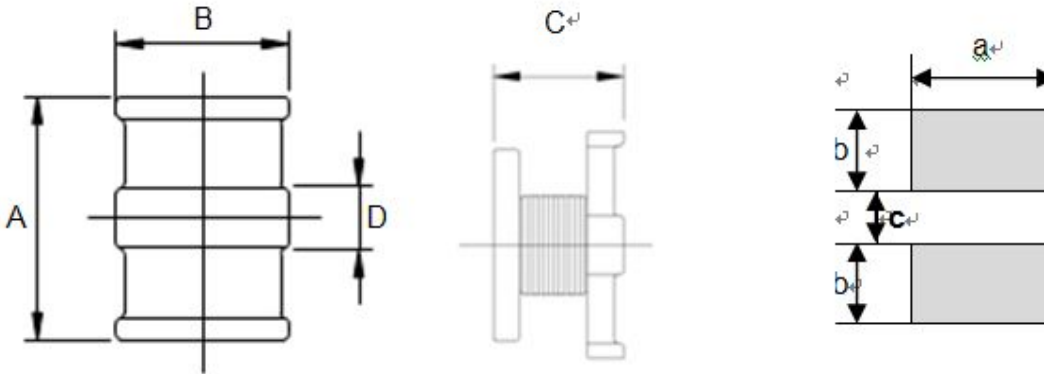
2R2
2

M
3

1. Series name.
2. Inductance.
3. Tolerance. (K=±10%, M=±20%)



Configurations & Dimensions



PCB Pattern

| Series Name | A | B | C | D | a | b | c |
|-------------|---------|---------|---------|----------|----------|-----------|----------|
| SIN 2520 | 2.5±0.3 | 2.0±0.3 | 1.8±0.3 | 0.8(REF) | 2.0(REF) | 1.10(REF) | 0.5(REF) |
| SIN 3216 | 3.2±0.3 | 1.6±0.3 | 1.8±0.3 | 0.8(REF) | 1.6(REF) | 1.20(REF) | 0.5(REF) |
| SIN 3225 | 3.2±0.3 | 2.5±0.2 | 2.0±0.2 | 1.2(REF) | 2.5(REF) | 1.10(REF) | 1.0(REF) |
| SIN 4532 | 4.5±0.3 | 3.2±0.2 | 2.6±0.2 | 2.1(REF) | 3.2(REF) | 1.5(REF) | 1.5(REF) |

Unit: mm

ADB Technology Co., Ltd.

Unshielded Construction - SMT / SIN Series

Electrical Characteristics

| <i>SIN 2520 Series</i> | | | | |
|------------------------|--------------------------|---------------------------------|--------------------------------------|------------------------------|
| Part Number | Inductance (μ H) | Test Condition (Volt / Hz) | DC Resistance Max. (m Ω) | Rated Current Max. (mA) |
| SIN 2520-1R0 __ | 1.0 | 1.0 / 7.96M | 442 | 475 |
| SIN 2520-1R5 __ | 1.5 | 1.0 / 7.96M | 546 | 435 |
| SIN 2520-2R2 __ | 2.2 | 1.0 / 7.96M | 650 | 390 |
| SIN 2520-3R3 __ | 3.3 | 1.0 / 7.96M | 845 | 340 |
| SIN 2520-4R7 __ | 4.7 | 1.0 / 7.96M | 1040 | 285 |
| SIN 2520-6R8 __ | 6.8 | 1.0 / 7.96M | 1300 | 275 |
| SIN 2520-100 __ | 10 | 1.0 / 2.52M | 2197 | 210 |
| SIN 2520-150 __ | 15 | 1.0 / 2.52M | 2860 | 175 |
| SIN 2520-220 __ | 22 | 1.0 / 2.52M | 3640 | 160 |
| SIN 2520-330 __ | 33 | 1.0 / 2.52M | 5460 | 120 |

ADB

ADB Technology Co., Ltd.

Unshielded Construction - SMT / SIN Series

Electrical Characteristics

| <i>SIN 3216 Series</i> | | | | |
|------------------------|--------------------------|---------------------------------|-----------------------------|------------------------------|
| Part Number | Inductance (μ H) | Test Condition (Volt / Hz) | DC Resistance Max. (m) | Rated Current Max. (mA) |
| SIN 3216-R12 __ | 0.12 | 1.0 / 1.0M | 112 | 970 |
| SIN 3216-R22 __ | 0.22 | 1.0 / 1.0M | 140 | 850 |
| SIN 3216-R47 __ | 0.47 | 1.0 / 1.0M | 210 | 700 |
| SIN 3216-1R0 __ | 1.0 | 1.0 / 1.0M | 364 | 510 |
| SIN 3216-2R2 __ | 2.2 | 1.0 / 1.0M | 533 | 430 |
| SIN 3216-4R7 __ | 4.7 | 1.0 / 1.0M | 845 | 340 |
| SIN 3216-100 __ | 10 | 1.0 / 1.0M | 1690 | 230 |
| SIN 3216-220 __ | 22 | 1.0 / 1.0M | 3900 | 160 |
| SIN 3216-101 __ | 100 | 1.0 / 1.0M | 15,600 | 80 |
| <i>SIN 3225 Series</i> | | | | |
| Part Number | Inductance (μ H) | Test Condition (Volt / Hz) | DC Resistance Max. (m) | Rated Current Max. (mA) |
| SIN 3225-1R0 __ | 1.0 | 1.0 / 1.0M | 117 | 800 |
| SIN 3225-2R2 __ | 2.2 | 1.0 / 1.0M | 165 | 650 |
| SIN 3225-4R7 __ | 4.7 | 1.0 / 1.0M | 260 | 450 |
| SIN 3225-100 __ | 10 | 1.0 / 1.0M | 572 | 300 |
| SIN 3225-220 __ | 22 | 1.0 / 1.0M | 923 | 250 |
| SIN 3225-470 __ | 47 | 1.0 / 1.0M | 1690 | 170 |
| SIN 3225-101 __ | 100 | 1.0 / 1.0M | 4550 | 100 |
| SIN 3225-221 __ | 220 | 1.0 / 1.0M | 10920 | 70 |
| SIN 3225-331 __ | 330 | 1.0 / 1.0M | 13,000 | 60 |
| SIN 3225-391 __ | 390 | 1.0 / 1.0M | 22,100 | 60 |
| SIN 3225-471 __ | 470 | 1.0 / 1.0K | 24700 | 60 |
| SIN 3225-561 __ | 560 | 1.0 / 1.0K | 28,600 | 60 |

ADB Technology Co., Ltd.

Unshielded Construction - SMT / SIN Series

Electrical Characteristics

| <i>SIN 4532 Series</i> | | | | |
|------------------------|--------------------------|---------------------------------|--------------------------------------|------------------------------|
| Part Number | Inductance (μ H) | Test Condition (Volt / Hz) | DC Resistance Max. (m Ω) | Rated Current Max. (mA) |
| SIN 4532-1R0 __ | 1.0 | 1.0 / 1.0M | 80 | 1080 |
| SIN 4532-1R5 __ | 1.5 | 1.0 / 1.0M | 90 | 1000 |
| SIN 4532-2R2 __ | 2.2 | 1.0 / 1.0M | 110 | 900 |
| SIN 4532-3R3 __ | 3.3 | 1.0 / 1.0M | 130 | 800 |
| SIN 4532-4R7 __ | 4.7 | 1.0 / 1.0M | 150 | 750 |
| SIN 4532-6R8 __ | 6.8 | 1.0 / 1.0M | 250 | 800 |
| SIN 4532-100 __ | 10 | 1.0 / 1.0M | 240 | 650 |
| SIN 4532-150 __ | 15 | 1.0 / 1.0M | 320 | 570 |
| SIN 4532-220 __ | 22 | 1.0 / 1.0M | 600 | 420 |
| SIN 4532-330 __ | 33 | 1.0 / 1.0M | 1,000 | 310 |
| SIN 4532-470 __ | 47 | 1.0 / 1.0M | 1,100 | 280 |
| SIN 4532-680 __ | 68 | 1.0 / 1.0M | 2,300 | 200 |
| SIN 4532-101 __ | 100 | 1.0 / 1.0M | 2200 | 190 |
| SIN 4532-151 __ | 150 | 1.0 / 1.0M | 3500 | 130 |
| SIN 4532-221 __ | 220 | 1.0 / 1.0M | 4000 | 110 |
| SIN 4532-331 __ | 330 | 1.0 / 1.0M | 6800 | 100 |
| SIN 4532-471 __ | 470 | 1.0 / 1.0K | 8500 | 90 |